

BREL motors is part of:

BREL nederland b.v.

Manual Brel Radio Tubular motor

Type MLE

Read the manual before you begin the installation. If these instructions are not followed, this may lead to defects and injury in which warranty can't be claimed.

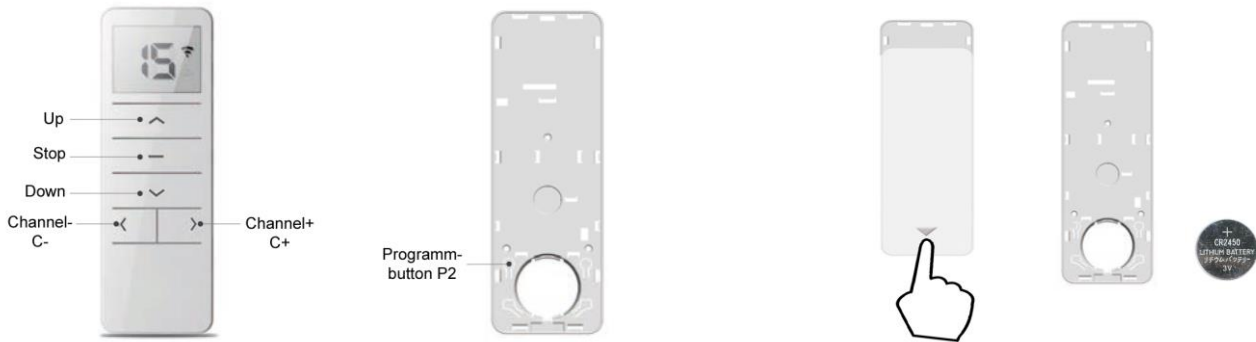
warning:

Children cannot recognize the dangers of electrical equipment and may therefore not work with it. **It is important to follow this instruction for your own safety.**

1. Do not operate the motor in humid surroundings.
2. The motor must be installed correctly.
3. Keep the antenna in a good condition and do not shorten. The antenna should not come into contact with other metal parts otherwise it will reduce the effect.
4. The motor must be protected from direct moisture influences.



Functions remote control



Works with all BREL transmitters:



Technical data of the motor

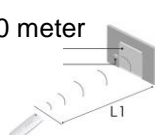
- Motor voltage:
- Charge voltage:
- Maximum ampere charger:
- Power:
- Torque:
- Speed:
- Amperage:
- Moisture and dust:
- Storage capacity is up to 20 channels:
- Working temperature of the motor:
 - Heavy use: -10°C tot +40°C
 - Normal use: -20°C tot +70°C

	MLE15-0.3	MLE16-0.3	MLE25-1.1	MLE28-2	MLE35-3	MLE35-10
Motor voltage:	DC 8V	DC 8V	DC 8V	DC 12V	DC 12V	DC 12V
Charge voltage:	DC 5V	DC 5V	DC 5V	DC 5V	DC 12.6V	DC 12.6V
Maximum ampere charger:	2 A	2 A	2 A	2 A	2 A	2 A
Power:	5 W	3.6 W	8 W	15 W	26 W	26 W
Torque:	0.3 Nm	0.3 Nm	1.1 Nm	2 Nm	3 Nm	10 Nm
Speed:	30 rpm	50 rpm	28 rpm	28 rpm	28 rpm	9 rpm
Amperage:	0.6 A	0.78 A	0.94 A	1.25 A	2.20 A	2.20 A
Moisture and dust:	IP44	IP44	IP44	IP44	IP44	IP44

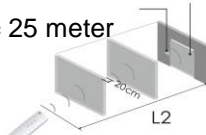


Reach

L1 = 100 meter



L2 = 25 meter



If charging the MLE15, MLE25, only use a charger with Micro-USB plug (5V)

The battery is fully charged when the light stops blinking and lights-up continuously.

**For charging in the UK the MLE16 and MLE28 and MLE35 only use the DC-213 (12.6V).
For Europe use DC-212.**

The battery is fully charged when the light on the charger **DC-212/ DC-213** changes from red to blue.

Make sure that during installation the motor is sufficiently charged. Take care that the motor is not operated during charging.



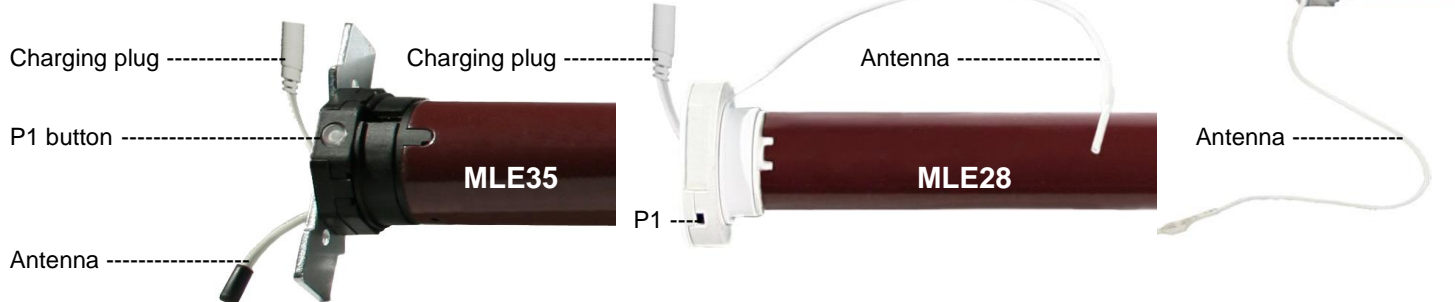
Functions

MLE15, MLE25



Note: Take away the plastic cover to connect the micro-USB plug to the motor.

MLE16 and MLE28 and MLE35



Installing the motor

Attach the crown and wheel to the motor and place the clip on the shaft of the motor so that the wheel is fixed to the motor.

Install the motor with the motorbracket on the product and take care that it is secured.

Place the motor in the tube of the roller/shutter.

(These assemblies are usually already done in the factory) During programming the motor; the following must be done within 10sec. After 10 sec. the motor will quit the programming mode.



EMERGENCY CONTROL: If a transmitter has been paired and the end positions determined in the motor, you can use the P1 key as the control key.

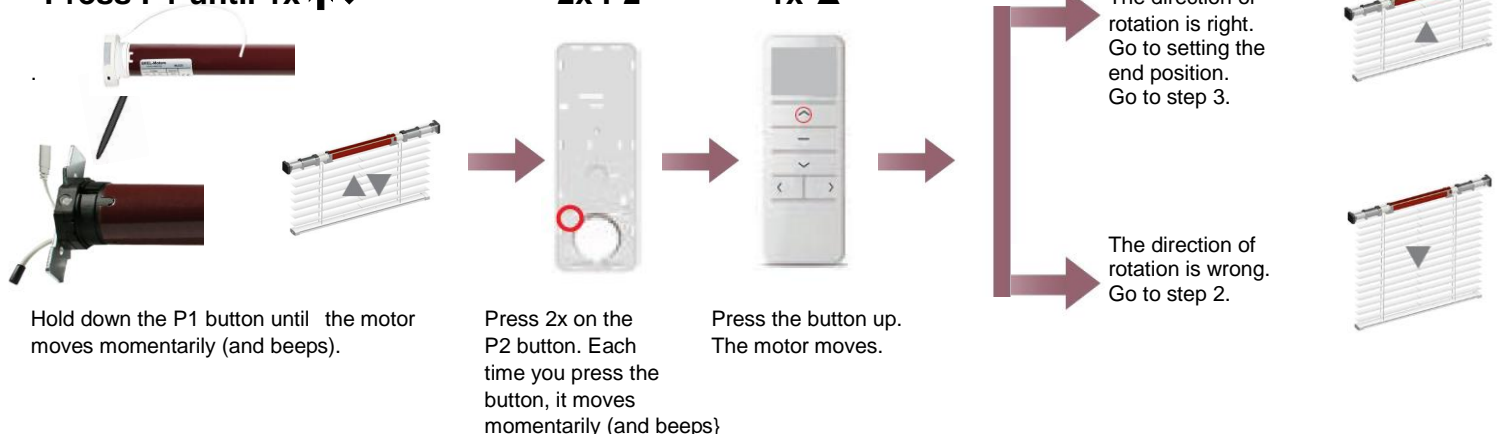
NOTE:  **The MLE15 and MLE 16 does not beep.**

Step 1 Setting up the first channel

Press P1 until 1x 

2x P2

1x 



Hold down the P1 button until the motor moves momentarily (and beeps).

Press 2x on the P2 button. Each time you press the button, it moves momentarily (and beeps)

Press the button up. The motor moves.

The direction of rotation is right. Go to setting the end position. Go to step 3.

The direction of rotation is wrong. Go to step 2.

With the above action you will delete all channels in memory and the final setting.

Step 2 Change direction

Variant A If the direction is right, skip step 2 and proceed to step 3.

Press P1 until 1x



Hold down the P1 button until the motor moves 2x momentarily (and beeps).

2x P2



Press 2x on the P2 button. Each time you press the button, it moves momentarily (and beeps).

1x

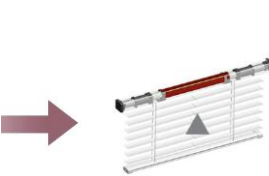


Press the button down. The motor moves. (At the end you will hear 6 beeps).

1x



Press the button up.



The product will now go up. Reading the first transmitter has been completed. You can now proceed with setting the end limits.

Variant B

Press P1 until 3x



Hold down the P1 button until the motor moves 3x momentarily (and beeps).



The direction of rotation is changed.

Step 3 Setting the end limits

If no limit positions are set, the motor will only move in the pulse setting.

1x P2



Press the P2 button. The motor moves momentarily (and beeps).

1x



Press the button up. The motor moves momentarily (and beeps).

1x P2



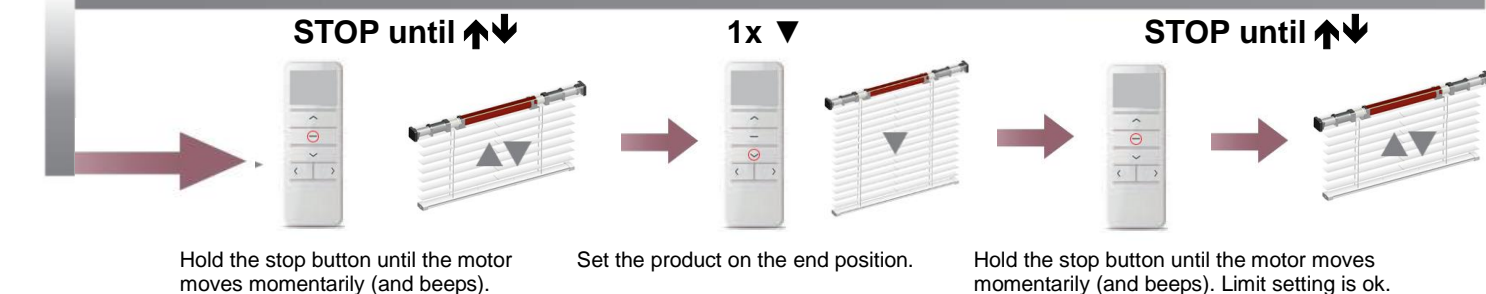
Press the P2 button. The motor (beeps 4x).

It moves momentarily.

1x



Set the product on the desired top position.



STOP until

Hold the stop button until the motor moves momentarily (and beeps).

1x

Set the product on the end position.

STOP until

Hold the stop button until the motor moves momentarily (and beeps). Limit setting is ok.

Step 4 Setting third limit position

If you press the stop button for more than 3 seconds, the motor will move from any position to the third limit position.

1x P2



Go to the desired third limit position

2x STOP



Press stop button 2x.



It moves momentarily for confirmation.

To remove the third limit position, you must go to the third position and repeat above action.

Additional settings

Option A Delete limit position

Deleting the limit position can be done in two ways:

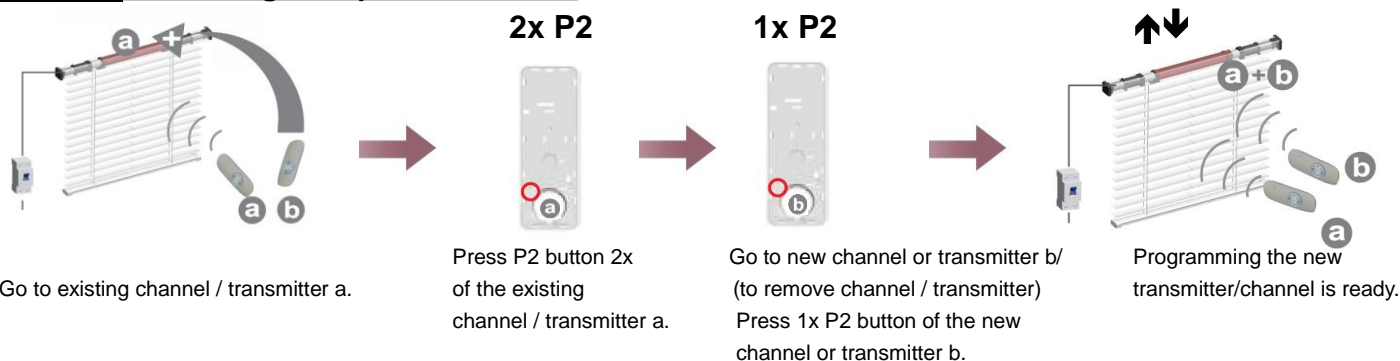
1. When step 1, setting up the first channel also the limit setup will be removed.
2. 1x P2 1x ▼ 1x P2



Press P2 button 1x. (The motor beeps 1x). Press the button down. (The motor beeps 1x). Press P2 button 1x. (The motor beeps 4x).

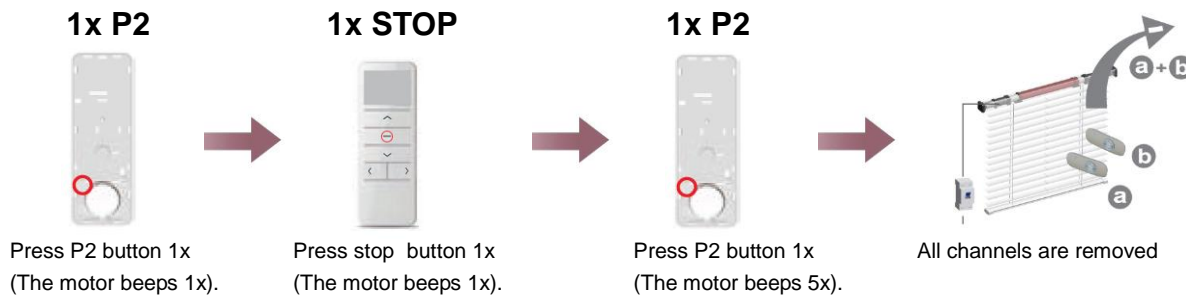
Each time you press a key you hear a beep.
The limit positions are now removed from the memory.
You can now re-read the limit position.

Option B Teaching multiple transmitters (Up to 20 transmitters per receiver)



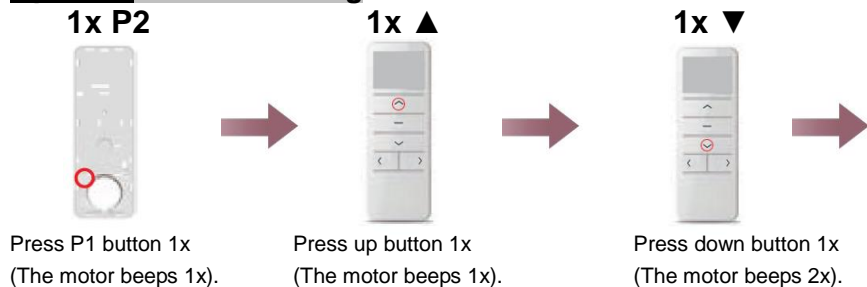
To delete one channel, you must repeat the above operation.

Option C Delete all



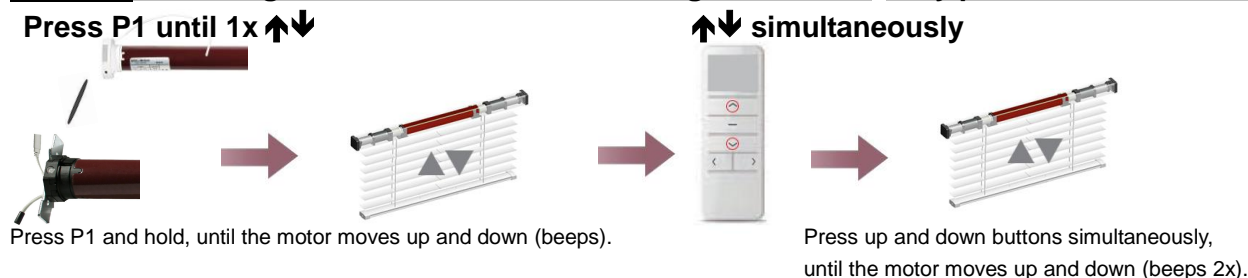
To reset everything, press P1 until the motor has moved 3 times.

Option D Pulse setting



To remove the pulse setting, repeat the above operation.

Option E Pairing new remote while maintaining end limits. Only possible if the end limit is set.



Option F Speed control

- Increase the speed of the motor.

Ⓜ + STOP simultaneously ↑↓



➔ **OK**

Push up and stop simultaneously, until the motor moves.

- Reduce the speed of the motor.

Ⓜ + STOP simultaneously ↑↓



➔ **OK**

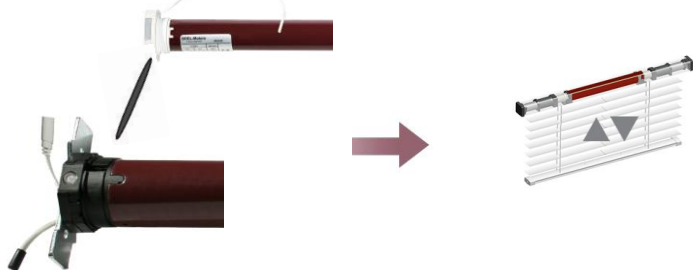
Press down and stop simultaneously, until the motor moves.

If the motor is not moving, it is already in the highest or lowest speed.

There are 3 different speeds; Namely: 24 rpm → 1x↑↓ - 28 rpm → 2x↑↓ - 32 rpm → 3x↑↓.

Option G Reset everything

Press P1 until 4x ↑↓



Press P1 and hold, until the motor moves up and down 4x.

Option H Adjusting the top position

1x ▲



Go to the already set top position.

▲ ▼ simultaneously



Press simultaneously the button up and the down button until the motor moves. (The motor beeps 4x).

↑↓



The motor moves up and down. Go to the new upper position.

STOP until ↑↓



Hold the stop button until the motor moves momentarily. (The motor beeps 1x).

OK

Adjusting the bottom position

1x ▼



Go to the already set bottom position.

▲ ▼ simultaneously



Press simultaneously the button down and the up button until the motor moves.

↑↓



The motor moves up and down. Go to the new upper position.

STOP until ↑↓

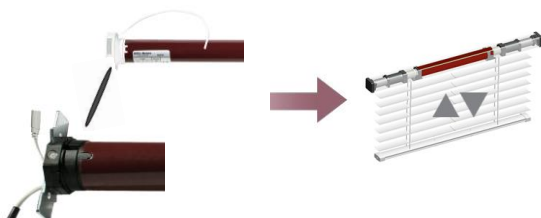


Hold the stop button until the motor moves momentarily.

OK

Option I Disable receiver

Press P1 until 2^ex ↑↓



Hold down the P1 until the motor moves for the 2^e time up and down.

The receiver is turned off.

1x P1



Press the P1 1x to reactivate the receiver.