

BREL motors is part of:

**BREL** nederland b.v.

## Manual Brel 28mm 230V stille electronic radio motor with receiver

### Type MPE25 en MPE28

**Read the manual before you begin the installation. If these instructions are not followed, this may lead to defects and injury in which warranty can't be claimed.**

#### warning:

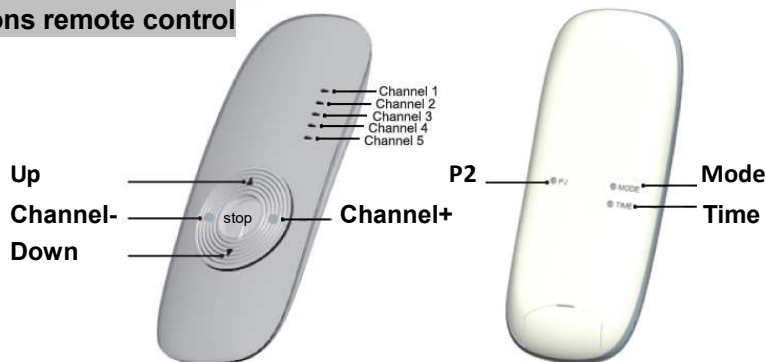
Children cannot recognize the dangers of electrical equipment and may therefore not work with it.

**It is important to follow this instruction for your own safety.**

1. Do not operate the motor in humid surroundings.
2. The motor must be installed correctly.
3. Keep the antenna in a good condition and do not shorten. The antenna should not come into contact with other metal parts otherwise it will reduce the effect.
4. The motor must be protected from direct moisture influences.



#### Functions remote control



*If in the 5 channel transmitter all the lights are lid. All the products are operated simultaneously. (mode and time have only a function on an emitter with a timer)*

#### Matchable with all BREL emitters:



#### Technisch gegevens van de motor

- Motor Voltage:
- Power:
- Torque:
- Speed:
- Ampèrage:
- Moisture and dust:
- Storage capacity is up to 20 channels
- Working temperature:
  - Normal use: -10°C tot +40°C
  - Heavy use: -20°C tot +70°C

#### Type MPE25-1.5

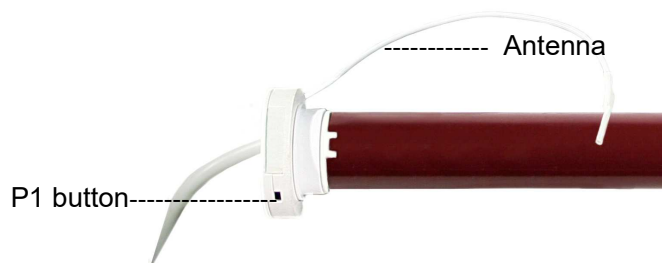
DC 100-240V  
13 Watt  
1.5 Nm  
32 rpm  
0.15 A  
IP44

#### Type MPE28-2

DC 100-240V  
18 Watt  
2 Nm  
28 rpm  
0.16 A  
IP44



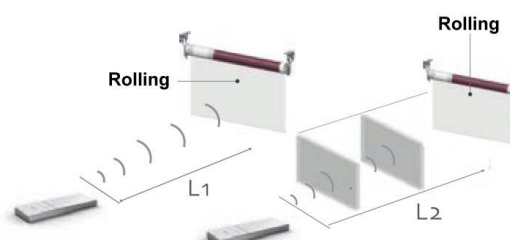
## Functions



## Reach

L1 = 200 meter

L2 = 35 meter



## Installing the motor

Attach the crown and wheel to the motor and place the clip on the shaft of the motor so that the wheel is fixed to the motor.

Install the motor with the motorbracket on the product and take care that it is secured.

Place the motor in the tube of the roller/shutter.

(These assemblies are usually already done in the factory)

During programming the motor the following must be done within 10sec.

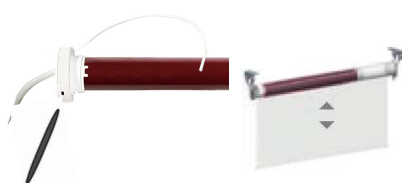
After 10 sec. the motor will quit the programming mode.



**EMERGENCY CONTROL:** If a channel is connected to the motor, you can use the P1 key as control key.

## Step 1 Setting up the first channel

**Press P1 until 1x ↑↓**



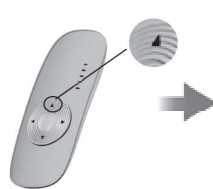
Hold down the P1 button until the motor moves momentarily (and beeps).

**2x P2**



Press 2x on the P2 button. Each time you press the button, it moves momentarily (and beeps)

**1x ↑**



Press the button up. The motor moves.

The direction of rotation is right. Go to setting the end position. Go to step 3.



The direction of rotation is wrong. Go to step 2.



*With the above action you will delete all channels in memory and the final setting.*

## Step 2 Change direction

**Variant A** If the direction is right, skip step 2 and proceed to step 3.

**Press P1 until 2x ↑↓**



Hold down the P1 button until the motor moves 2x momentarily (and beeps).

**2x P2**



Press 2x on the P2 button. Each time you press the button, it moves momentarily (and beeps).

**1x ↓**



Press the button down. The motor moves. (At the end you will hear 6 beeps).

**1x ↑**



Press the button up.

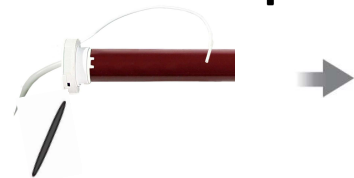
**↑**



The product will now go up. Reading the first transmitter has been completed. You can now proceed with setting the end limits.

### Variant B

Press P1 until 2x ↑↓



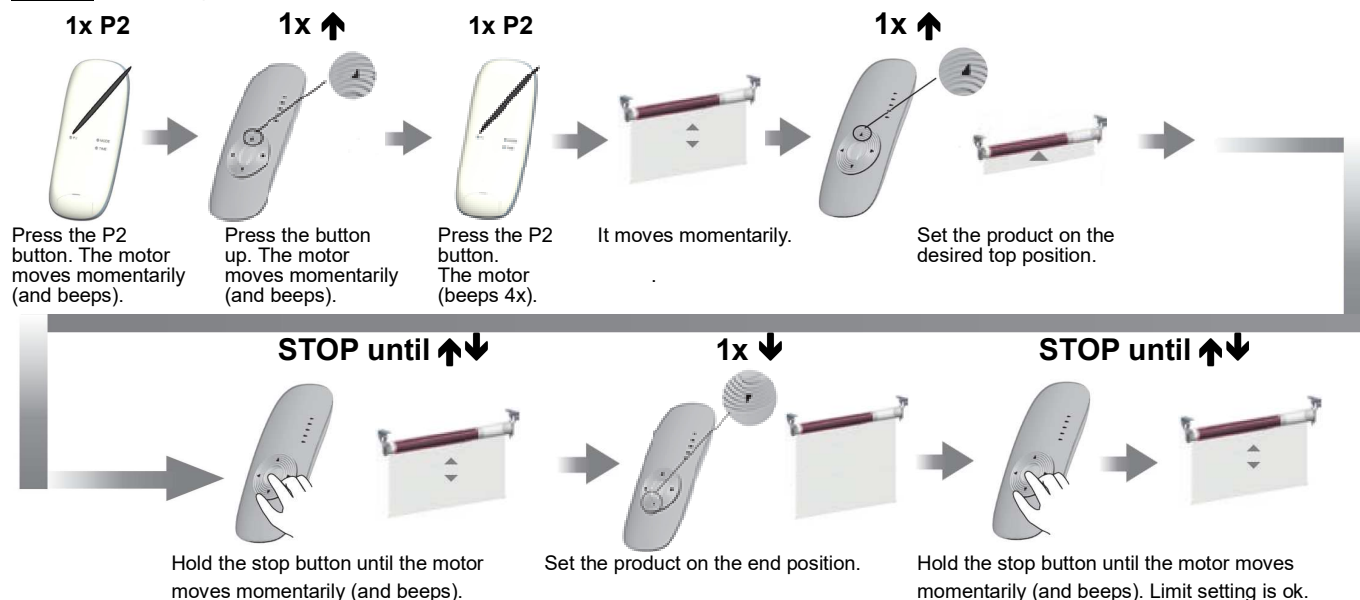
Hold down the P1 button until the motor moves 2x momentarily (and beeps).



The product moves momentarily 2x. The direction of rotation is changed.

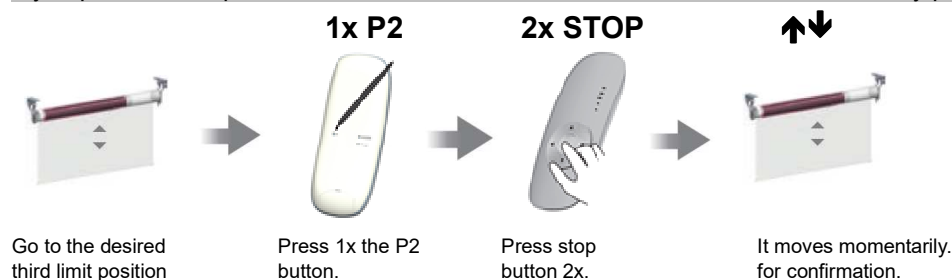
### Step 3 Setting the end limits

If no limit positions are set, the motor will only move in the pulse setting.



### Step 4 Setting third limit position

If you press the stop button for more than 3 seconds, the motor will move from any position to the third limit position.



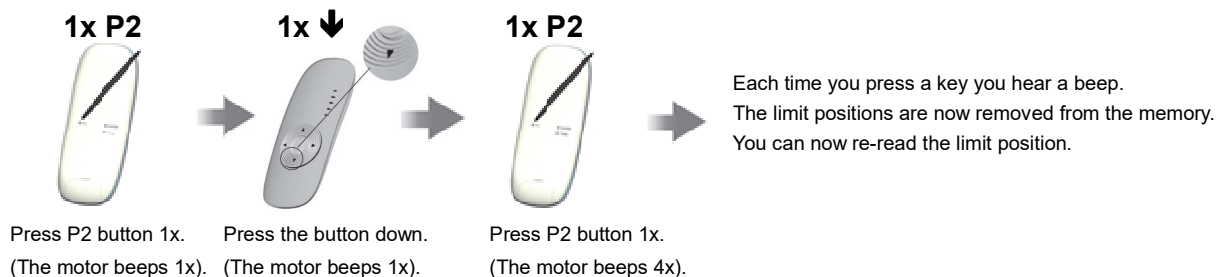
To remove the third limit position, you must repeat above action.

### Additional settings

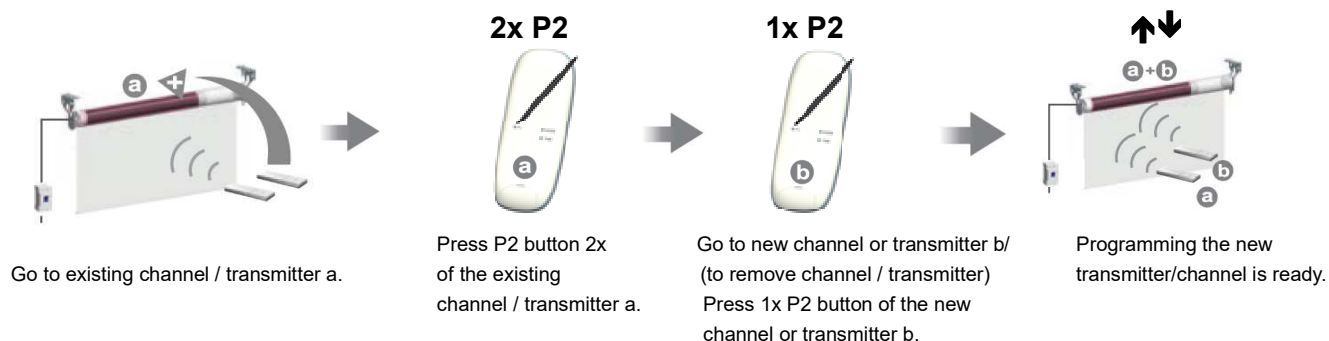
#### Option A Delete limit position

Deleting the limit position can be done in two ways:

1. When step 1, setting up the first channel also the limit setup will be removed.
- 2.

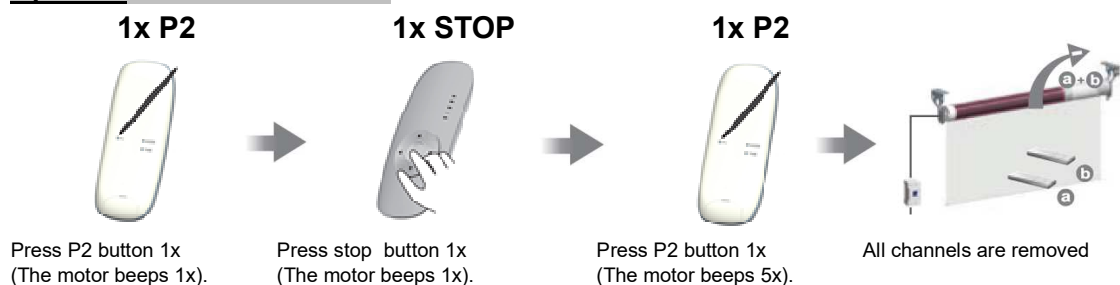


### Option B Teaching multiple transmitters (Up to 20 transmitters per receiver)

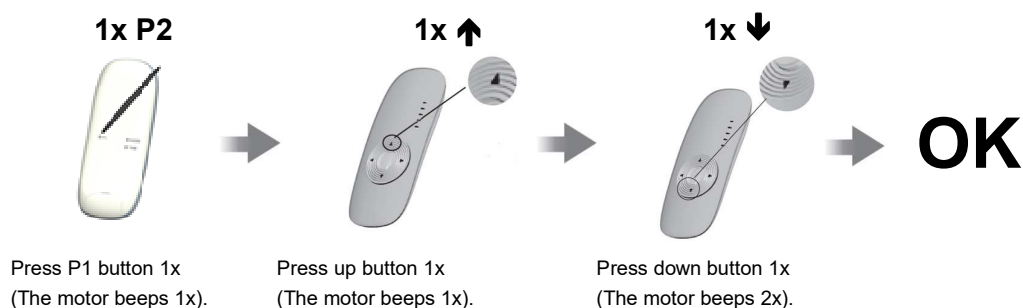


**To delete one channel , you must repeat the above operation.**

### Option C Delete all emitters

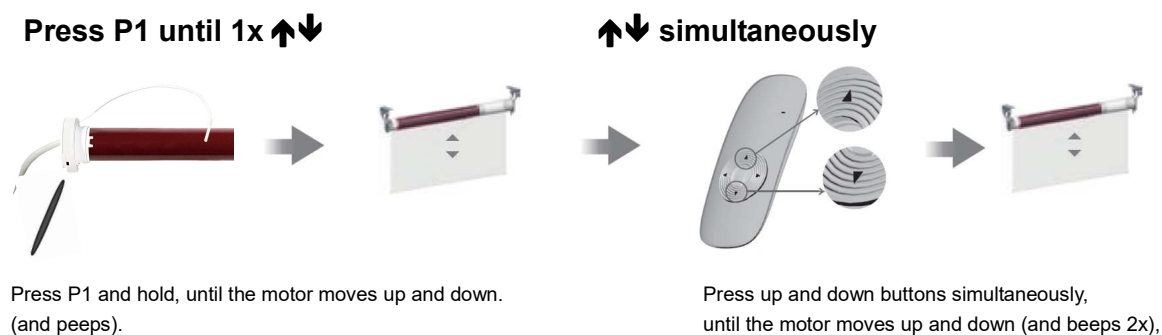


### Option D Pulse setting



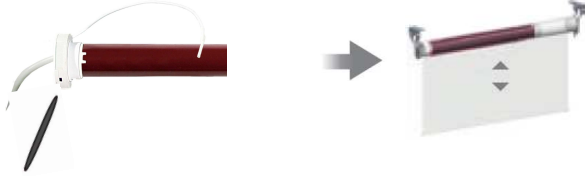
**To remove the pulse setting, repeat the above operation.**

### Option E Pairing new remote while maintaining end limits. Only possible if the end limit is set.



### Option F Reset everything

Press P1 until 3x ↑↓



Press P1 and hold, until the motor moves up and down 3x.

### Option G Adjusting the top position

**1x ↑**

Go to the already set top position.

**↑↓ simultaneously**

Press simultaneously the button up and the down button until the motor moves. (The motor beeps 4x).

**↑↓**

The motor moves up and down. Go to the new upper position.

**STOP until ↑↓**

Hold the stop button until the motor moves momentarily. (The motor beeps 5x).

**OK**

### Adjusting the bottom position

**1x ↓**

Go to the already set bottom position.

**↑↓ simultaneously**

Press simultaneously the button down and the up button until the motor moves. (The motor beeps 4x).

**↑↓**

The motor moves up and down. Go to the new upper position.

**STOP until ↑↓**

Hold the stop button until the motor moves momentarily. (The motor beeps 5x).

**OK**