

BREL motors is part of:

**BREL** nederland b.v.

## Manual Brel 22 mm 5V electronic radio motor with pullcord

### Type MLE22

**Read the manual before you begin the installation. If these instructions are not followed, this may lead to defects and injury in which warranty can't be claimed.**

#### warning:

Children cannot recognize the dangers of electrical equipment and may therefore not work with it. **It is important to follow this instruction for your own safety.**

1. Do not operate the motor in humid surroundings.
2. The motor must be installed correctly.
3. Keep the antenna in a good condition and do not shorten. The antenna should not come into contact with other metal parts otherwise it will reduce the effect.
4. The motor must be protected from direct moisture influences.



#### Functions remote control



#### Works with all BREL transmitters:



#### Technical data of the motor

- Motor voltage:
- Power:
- Torque:
- Speed:
- Amperage:
- Moisture and dust:
- Storage capacity is up to 20 channels:
- Working temperature of the motor:
  - Heavy use: -10°C tot +40°C
  - Normal use: -20°C tot +70°C

#### MLE22-0.5

**DC 5V 2A**  
**6 W**  
**0.5 Nm**  
**21 rpm**  
**0.70 A**  
**IP20**

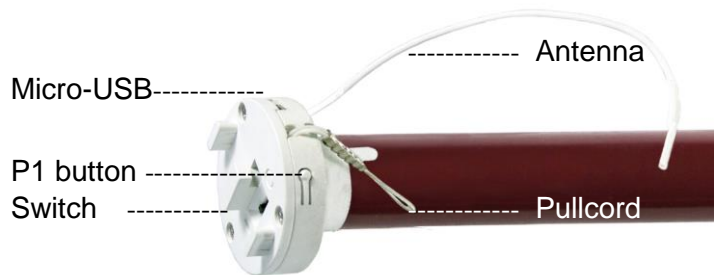


**To charge the MLE22, use a charger with micro-USB plug.**

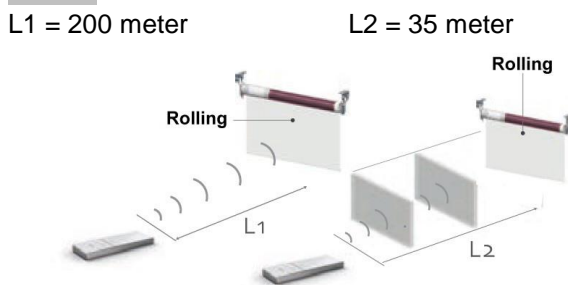
The battery is full when the light stops flashing and lights up green continuously.  
The battery is empty when the light is flashing red.



**Functions**



**Reach**



**Installing the motor**

Attach the crown and wheel to the motor and place the clip on the shaft of the motor so that the wheel is fixed to the motor.

Install the motor with the motorbracket on the product and take care that it is secured.

Place the motor in the tube of the roller/shutter.

(These assemblies are usually already done in the factory)

During programming the motor; the following must be done within 10sec.  
After 10 sec. the motor will quit the programming mode.

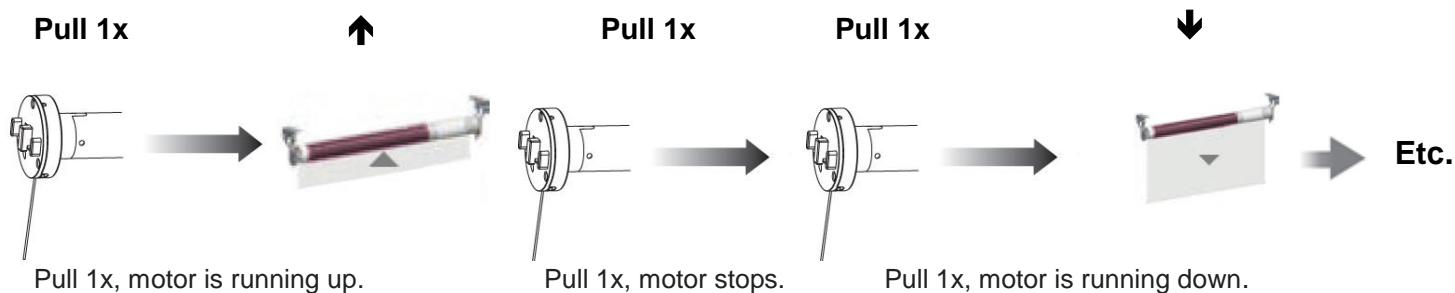


**FUNCTIONS WITH PULLCORD**

**Step 1 Set the switch on the motor to 1**

If no end positions are set, the motor is in pulse setting.

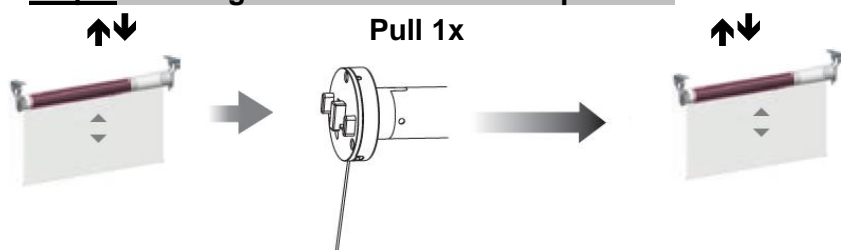
**Set up pullcord motor**



*If there is no limit and you continue to pull the pullcord, the motor will continue to run until you release.*

**Step 2 Setting top/bottom position**



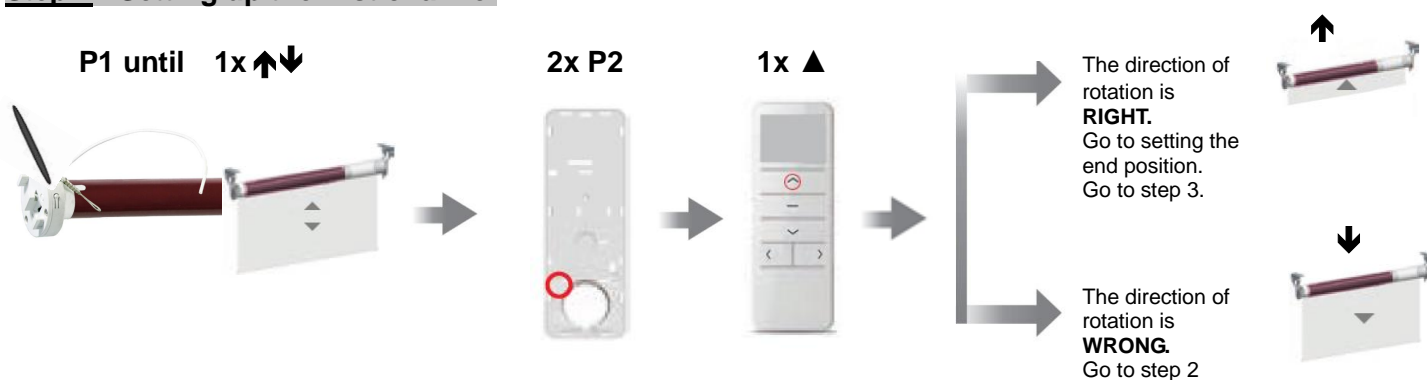
**Step 3 Setting the desired third limit position**

Go to the desired third limit position.

Hold the cord until the motor moves up and down.

*To go to the third limit position, tighten the cord until the motor starts running.*

*To remove / change the third limit position, the same procedure must be repeated at the position of the third limit position.*

**FUNCTIONS WITH REMOTE CONTROL****Step 1 Setting up the first channel**

Briefly press and release the **P1** button, until the motor moves back and forth.

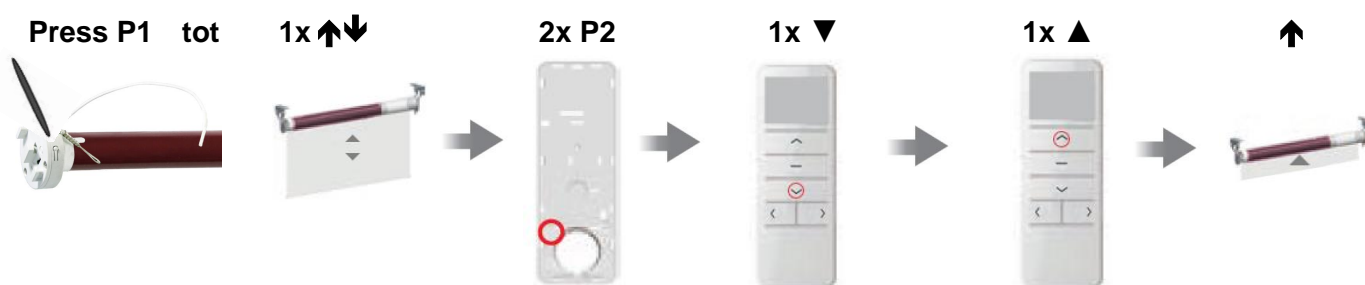
Press 2x on the **P2** button. Each time you press the button, it moves momentarily.

Press the button **up**. The motor moves.

*With the above action you will delete all channels in memory and the final setting.*

**Step 2 Change direction**

If the direction is right, skip step 2 and proceed to step 3.



Briefly press and release the **P1** key, until the motor moves back and forth.

Press 2x on the **P2** button. Each time you press the button, it moves momentarily.

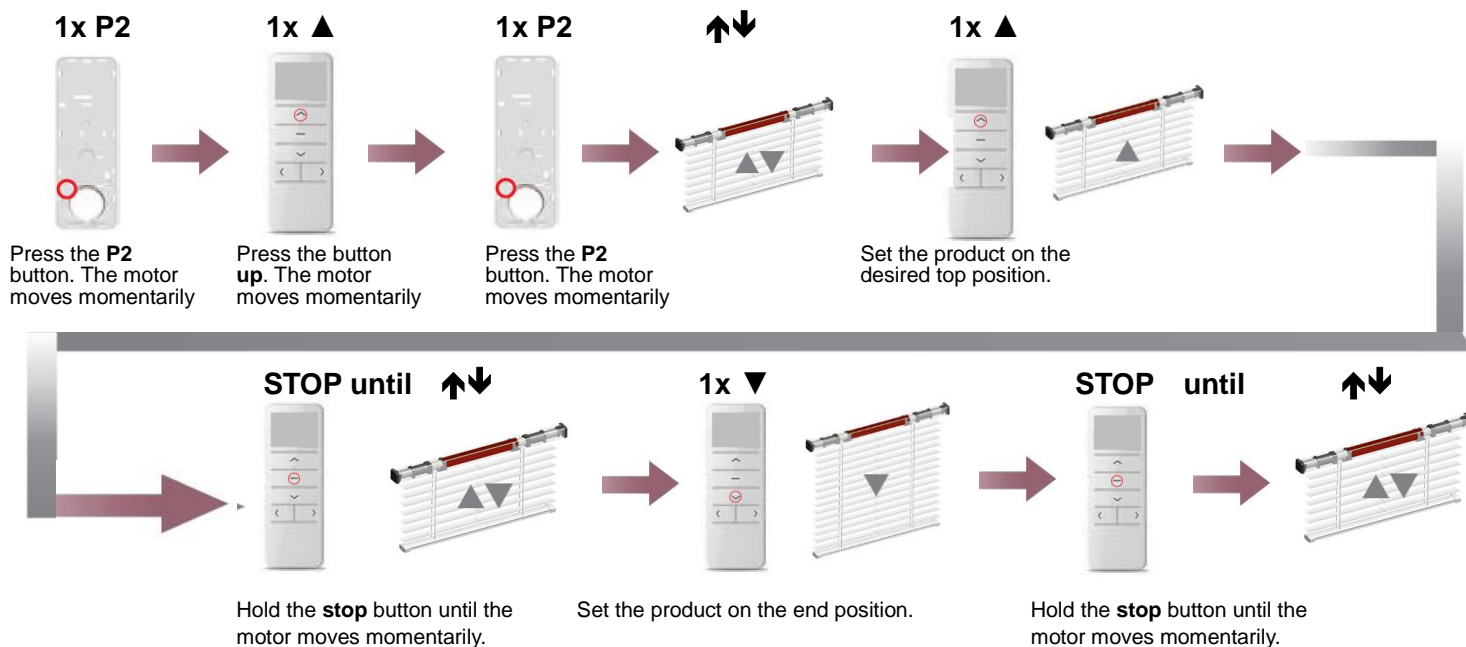
Press the button **down**. The motor moves.

Press the button **up**.

The product will now go **up**. Reading the first transmitter has been completed. You can now proceed with setting the end limits.

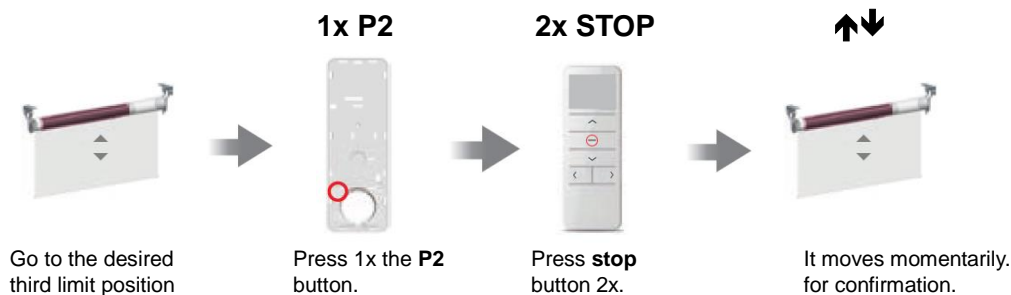
### Step 3 Setting the end limits

If no limit positions are set, the motor will only move in the pulse setting.



### Step 4 Setting third limit position

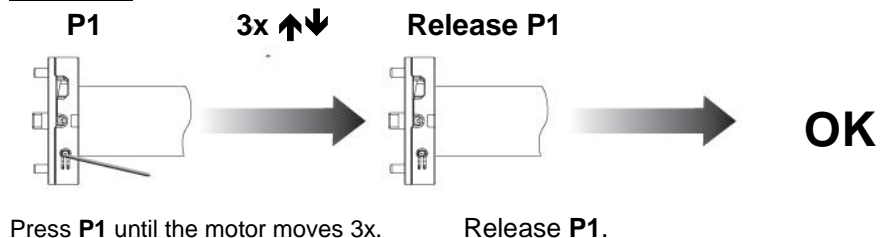
If you press the stop button for more than 3 seconds, the motor will move from any position to the third limit position.



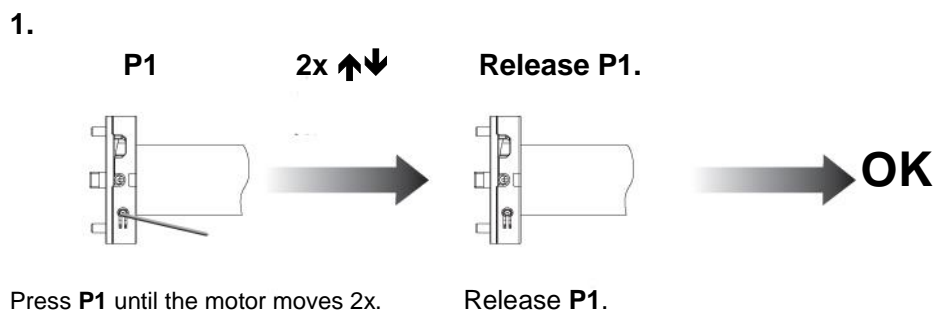
*To remove the third limit position, you must go to the third position and repeat above action.*

### Additional settings

#### Option A Reset all



#### Option B Delete limit position



2.

1. **Deleting the end position can also be done as follows:**

When step 1, setting up the first channel also the limit setup will be removed.

2. **1 x P2**



Press **P2** button 1x.



**1x ▼**



Press the button **down**.



**1x P2**



Press **P2** button 1x.



The end positions are now removed from the memory of the motor. You can now re-read the end position.

**Option C Teaching multiple transmitters** (Up to 20 transmitters per receiver)

**2x P2**



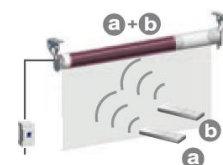
Press **P2** button 2x of the existing channel / transmitter **a**.



**1x P2**



Go to new channel or transmitter **b**/ (to remove channel / transmitter) Press 1x **P2** button of the new channel or transmitter **b**.



Programming the new transmitter/channel is ready.

Go to existing channel / transmitter **a**.

**To delete one channel , you must repeat the above operation.**

**Option D Delete all**

**1x P2**



Press P2 button 1x



**1x STOP**



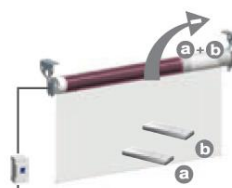
Press stop button 1x



**1x P2**



Press P2 button 1x



All channels are removed

**Option E Pulse setting**

**1x P2**



Press P1 button 1x



**1x ▲**



Press up button 1x



**1x ▼**



Press down button 1x



**OK**

**To remove the pulse setting, repeat the above operation.**

**Option F Teach in new transmitter while maintaining final settings.**

**Only possible if the final setting is set.**

Press P1 until 1x  $\uparrow\downarrow$   $\blacktriangle\blacktriangledown$  simultaneously  $\uparrow\downarrow$

Hold down the P1 key Shortly. Then let go. The motor moves up and down. Push up and down at the same time until the motor moves up and down.

**Option G Speed control**

**- Increase the speed of the motor**

**- Reduce the speed of the motor**

1x  $\blacktriangle$  + 1x STOP simultaneously  $\uparrow\downarrow$

1x  $\blacktriangledown$  + 1x STOP simultaneously  $\uparrow\downarrow$

OK OK

Push up and stop simultaneously, until the motor moves.

Press down and stop simultaneously, until the motor moves.

*If the motor is not moving, it is already in the highest or lowest speed.*

*There are 3 different speeds; Namely: 24 rpm  $\rightarrow$  1x  $\uparrow\downarrow$  - 28 rpm  $\rightarrow$  2x  $\uparrow\downarrow$  - 32 rpm  $\rightarrow$  3x  $\uparrow\downarrow$*

**Option H Adjusting the top position**

1x  $\blacktriangle$   $\uparrow$   $\blacktriangle\blacktriangledown$  simultaneously  $\uparrow$  STOP until  $\uparrow\downarrow$  OK

Go to the already set top position. Press simultaneously the button up and the down button until the motor moves. The motor moves up and down. Go to the new upper position. Hold the stop button until the motor moves momentarily.

**Adjusting the bottom position**

1x  $\blacktriangledown$   $\downarrow$   $\blacktriangle\blacktriangledown$  simultaneously  $\downarrow$  STOP until  $\uparrow\downarrow$  OK

Go to the already set bottom position. Press simultaneously the button down and the up button until the motor moves. The motor moves up and down. Go to the new upper position. Hold the stop button until the motor moves momentarily.